

29 July 2016

Quarterly Activities Report – Quarter Ended 30 June 2016

Acquisition of Nevada Lithium Projects

During the quarter ended 30 June 2016, the Company advised that it had entered into restriction agreements with the vendors of Nevada Metals Pty Ltd in relation to the issue of 600,000,000 fully paid ordinary shares as consideration payable. The restriction agreement provides for a period of six months escrow, being 29 December 2016.

On 23 May 2016, the Company announced that following a very successful site visit to Nevada, the Company had satisfactorily completed its due diligence in relation to the acquisition of the Lida Valley and Muddy Mountain Projects.

The shareholders of the Company approved the acquisition of Nevada Metals Pty Ltd and a 100% interest in the Lida Valley and Muddy Mountain Projects at the general meeting held on 28 June 2016.

Exploration

On 26 April 2016, the Company advised that a detailed ground gravity program on the Lida Valley Lithium Brine Project would commence in May as part of the Company's due diligence process.

Ground Gravity Program:

A detailed ground gravity survey of the Lida claim block in Esmeralda County, Nevada at a nominal 250m x 250m grid spacing, totalling up to 500 stations (**Figure 1**) was planned. Relative gravity measurements would be made using a Scintrex CG-5 High Temperature gravimeter, and station location would be determined using a Topcon Real-Time Kinematic (RTK) GNSS system. Hand-auger sampling would also be requested to evaluate immediate subsurface lithium concentrations.

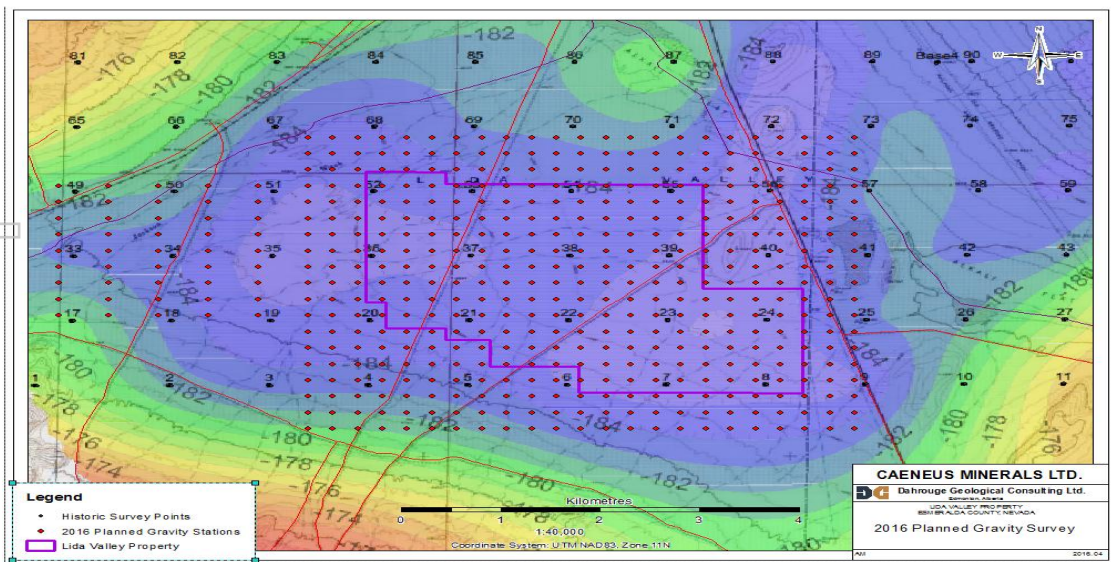


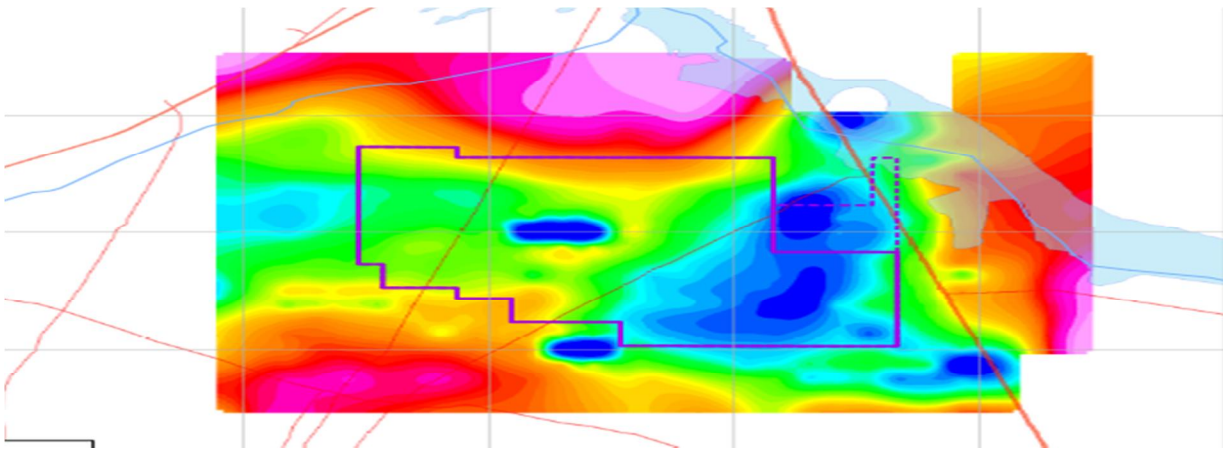
Figure 1: Lida Valley Ground Gravity Grid

On 14 June 2016, the Company announced the results from the detailed ground gravity survey at the Lida Valley Project situated 220 kilometers northwest of Las Vegas and 50 kilometres southeast of the Clayton Valley lithium operation in Nevada.

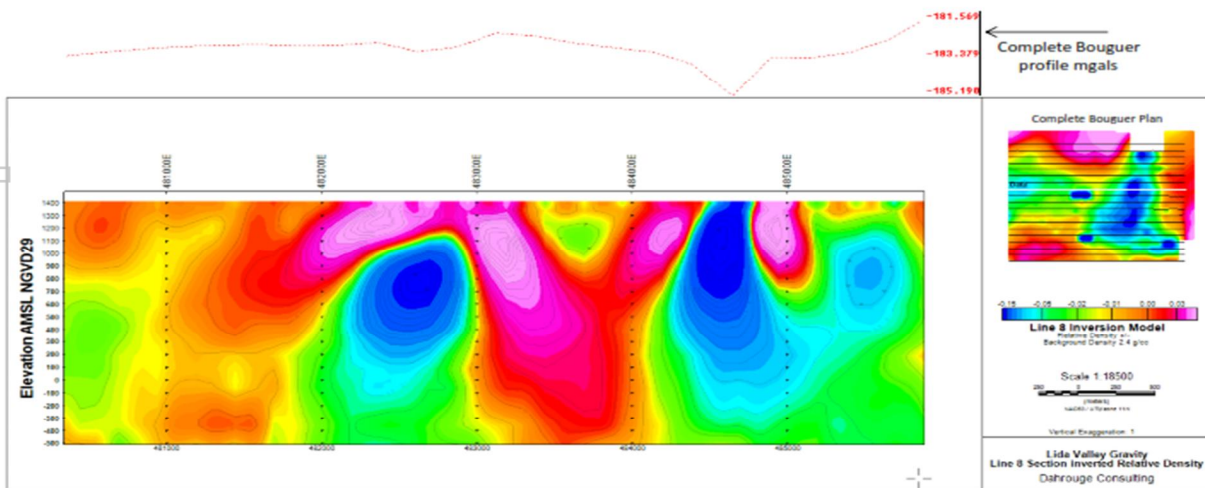
Lida Valley occupies a valley similar to the Clayton Valley with preliminary airborne aeromagnetic data showing a gravity low in the Lida Valley lease area. Gravity lows in this region typically indicate the presence of a sedimentary basin often containing evaporite sediments and lithium-bearing brines.

The detailed ground-borne gravity survey has confirmed the presence of a significant gravity low in the east of the Company's claims. This gravity low is about 1.5 to 2 kilometers wide in an east-west direction and 3 kilometers long in a north-south direction. The Company is confident that the gravity low indicates the presence of a sedimentary basin similar to that described above. Significantly, the gravity low is situated to the south of the Lida Valley proper and the drainages associated with it. The smaller sharp elliptical lows may be bedrock highs, possibly felsic volcanic plugs sticking up into the sediments.

The basin as defined by gravity extends beyond the northeast boundary of the current leases. The Company has rectified this situation by staking new claims over the currently unclaimed portion of the basin (dashed outline below).

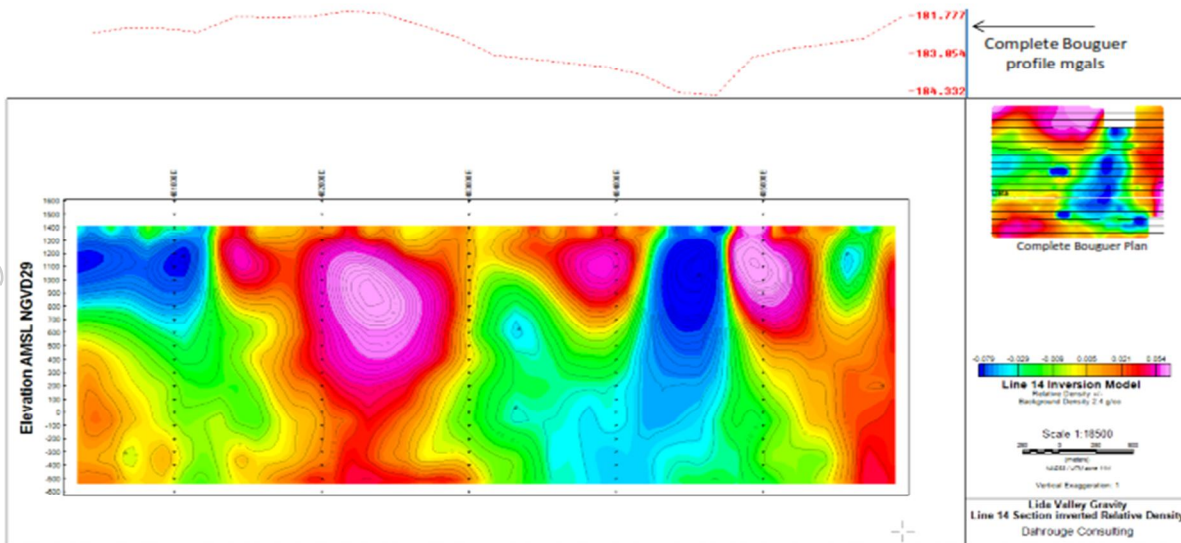


Preliminary evaluation indicates that the deepest part of the basin on the east side of the claim block exceeds 300 meters in depth. This gives the basin a total volume in excess of 700 million cubic meters, much of which may contain lithium-rich brines. Low density continues to a depth of about 1,700m (see section 8 and 14 below) suggesting the basin may be substantially deeper.



Section 8 Gravity Profile

For personal use only



Section 14 Gravity Profile

The information in this announcement that relates to Exploration Results, Mineral Resources or Ore Reserves is based on information compiled by Mr Steven Elliott who is a Member of the Australian Institute of Mining and Metallurgy. Mr Elliott is a director to the Company. Mr Elliott has sufficient experience which is relevant to the style and type of deposit under consideration and to the activity which he is undertaking to qualify as a Competent Person as defined in the 2012 edition of the Joint Ore Reserves Committee (JORC) Australasian Code for Reporting of Exploration Results, Minerals Resources and Ore Reserves. Mr Elliott consents to the inclusion in the announcement of the matters based on his information in the form and context in which it appears.

For and on behalf of the Board

Steven Elliott
Managing Director

Appendix 5B

Mining exploration entity and oil and gas exploration entity quarterly report

Introduced 01/07/96 Origin Appendix 8 Amended 01/07/97, 01/07/98, 30/09/01, 01/06/10, 17/12/10, 01/05/2013

Name of entity

CAENEUS MINERALS LTD

ABN

42 082 593 235

Quarter ended ("current quarter")

30 June 2016

Consolidated statement of cash flows

Cash flows related to operating activities	Current quarter \$A'000	Year to date (12 months) \$A'000
1.1 Receipts from product sales and related debtors	-	-
1.2 Payments for		
(a) exploration & evaluation	(121)	(250)
(b) development	-	-
(c) production	-	-
(d) administration	(193)	(831)
1.3 Dividends received	-	-
1.4 Interest and other items of a similar nature received	-	1
1.5 Interest and other costs of finance paid	-	-
1.6 Income taxes paid	-	-
1.7 Other income (GST)	19	19
Net Operating Cash Flows	(295)	(1,061)
Cash flows related to investing activities		
1.8 Payment for purchases of:		
(a) prospects	(74)	(74)
(b) equity investments	-	-
(c) other fixed assets	-	-
1.9 Proceeds from sale of:		
(a) prospects	-	-
(b) equity investments	-	-
(c) other fixed assets	-	-
1.10 Loans to related entities	-	(25)
1.11 Loans repaid by other entities	-	-
1.12 Other (provide details if material)	-	-
Net investing cash flows	(74)	(99)
1.13 Total operating and investing cash flows (carried forward)	(369)	(1,160)

+ See chapter 19 for defined terms.

Appendix 5B

Mining exploration entity and oil and gas exploration entity quarterly report

1.13	Total operating and investing cash flows (brought forward)	(369)	(1,160)
Cash flows related to financing activities			
1.14	Proceeds from issues of shares, options, etc.	2	1,186
1.15	Proceeds from sale of forfeited shares		
1.16	Proceeds from borrowings		
1.17	Repayment of borrowings		
1.18	Dividends paid		
1.19	Other		
	- Funds received from shares yet to be issued	60	60
	- Issue of convertible notes	-	150
	- Share issue costs	-	(34)
	Net financing cash flows	62	1,362
	Net increase (decrease) in cash held	(307)	202
1.20	Cash at beginning of quarter/year to date	514	5
1.21	Exchange rate adjustments to item 1.20		
1.22	Cash at end of quarter¹	207	207

¹ Subsequent to the end of the quarter, the Company raised \$1,230,702 (before costs) via a placement to sophisticated and institutional investors. The Company also received \$120,793 following the exercise of 40,264,309 unlisted 31/12/2020 options.

Payments to directors of the entity, associates of the directors, related entities of the entity and associates of the related entities

		Current quarter \$A'000
1.23	Aggregate amount of payments to the parties included in item 1.2	28
1.24	Aggregate amount of loans to the parties included in item 1.10	-

1.25 Explanation necessary for an understanding of the transactions

Directors' fees payments are on normal commercial terms.

Non-cash financing and investing activities

2.1 Details of financing and investing transactions which have had a material effect on consolidated assets and liabilities but did not involve cash flows

During the quarter, the Company issued 600,000,000 fully paid ordinary shares at a deemed issue price of \$0.001 each and 300,000,000 unlisted options exercisable at \$0.003 each expiring 31 December 2020 to acquire 100% of the issued capital of private company Nevada Metals Pty Ltd.

The Company also issued 225,000,000 fully paid ordinary shares to DG Resource Management at a deemed issue price of \$0.001 each as part of the consideration payable under the Mining Claims Acquisition.

The Company also issued 30,000,000 fully paid ordinary shares at a deemed issue price of \$0.001 each and 15,000,000 unlisted options exercisable at \$0.003 each expiring 31 December 2020 to a creditor of the Company for services rendered.

All of the above were approved by shareholders at the Company's General Meeting held on 28 June 2016.

+ See chapter 19 for defined terms.

Appendix 5B

Mining exploration entity and oil and gas exploration entity quarterly report

- 2.2 Details of outlays made by other entities to establish or increase their share in projects in which the reporting entity has an interest

N/A

Financing facilities available

Add notes as necessary for an understanding of the position.

	Amount available \$A'000	Amount used \$A'000
3.1 Loan facilities	-	-
3.2 Credit standby arrangements	-	-

Estimated cash outflows for next quarter

	\$A'000
4.1 Exploration and evaluation	400
4.2 Development	-
4.3 Production	-
4.4 Administration	100
Total	500

Reconciliation of cash

Reconciliation of cash at the end of the quarter (as shown in the consolidated statement of cash flows) to the related items in the accounts is as follows.	Current quarter \$A'000	Previous quarter \$A'000
5.1 Cash on hand and at bank	207	514
5.2 Deposits at call	-	-
5.3 Bank overdraft	-	-
5.4 Other (provide details)	-	-
Total: cash at end of quarter (item 1.22)	207	514

+ See chapter 19 for defined terms.

For personal use only

Appendix 5B

Mining exploration entity and oil and gas exploration entity quarterly report

Changes in interests in mining tenements and petroleum tenements

	Tenement reference and location	Nature of interest (note (2))	Interest at beginning of quarter	Interest at end of quarter
6.1	Interests in mining tenements and petroleum tenements relinquished, reduced or lapsed	N/A		
6.2	Interests in mining tenements and petroleum tenements acquired or increased	Refer to Annexure A Held by subsidiary Nevada Metals Pty Ltd	-	100%

6.3 Interests in mining tenements at end of the quarter

REFER TO ANNEXURE B

+ See chapter 19 for defined terms.

For personal use only

Mining exploration entity and oil and gas exploration entity quarterly report

Issued and quoted securities at end of current quarter

Description includes rate of interest and any redemption or conversion rights together with prices and dates.

	Total number	Number quoted	Issue price per security (see note 3) (cents)	Amount paid up per security (see note 3) (cents)
7.1 Preference + securities (description)				
7.2 Changes during quarter (a) Increases through issues (b) Decreases through returns of capital, buy-backs, redemptions				
7.3 +Ordinary securities	3,268,226,117	3,268,226,117		
7.4 Changes during quarter (a) Increases through issues (b) Decreases through returns of capital, buy-backs	855,000,000	855,000,000		
7.5 +Convertible debt securities (description)	-	-		
7.6 Changes during quarter (a) Increases through issues (b) Decreases through securities matured, converted				
7.7 Options (description and conversion factor)	19,500,000 306,150,001 1,306,779,921	- - -	<i>Exercise price</i> \$0.005 \$0.030 \$0.003	<i>Expiry date</i> 31 Dec 2016 27 Feb 2017 31 Dec 2020
7.8 Issued during quarter	756,322,612	-	\$0.003	31 Dec 2020
7.9 Exercised during quarter				
7.10 Expired during quarter				
7.11 Debentures (totals only)				
7.12 Unsecured notes (totals only)				

+ See chapter 19 for defined terms.

Appendix 5B
Mining exploration entity and oil and gas exploration entity quarterly report

Compliance statement

- 1 This statement has been prepared under accounting policies which comply with accounting standards as defined in the Corporations Act or other standards acceptable to ASX (see note 5).
- 2 This statement does give a true and fair view of the matters disclosed.

Sign here:



(Director/Company secretary)

Date: 29 July 2016

Print name: Keith Bowker

Notes

- 1 The quarterly report provides a basis for informing the market how the entity's activities have been financed for the past quarter and the effect on its cash position. An entity wanting to disclose additional information is encouraged to do so, in a note or notes attached to this report.
- 2 The "Nature of interest" (items 6.1 and 6.2) includes options in respect of interests in mining tenements and petroleum tenements acquired, exercised or lapsed during the reporting period. If the entity is involved in a joint venture agreement and there are conditions precedent which will change its percentage interest in a mining tenement or petroleum tenement, it should disclose the change of percentage interest and conditions precedent in the list required for items 6.1 and 6.2.
- 3 **Issued and quoted securities** The issue price and amount paid up is not required in items 7.1 and 7.3 for fully paid securities.
- 4 The definitions in, and provisions of, *AASB 6: Exploration for and Evaluation of Mineral Resources* and *AASB 107: Statement of Cash Flows* apply to this report.
- 5 **Accounting Standards** ASX will accept, for example, the use of International Financial Reporting Standards for foreign entities. If the standards used do not address a topic, the Australian standard on that topic (if any) must be complied with.

== == == == ==

+ See chapter 19 for defined terms.

For personal use only

ANNEXURE A

Item 6.2 – Interests in mining tenements and petroleum tenements acquired or increased

All tenements below are in the State of Nevada in USA.

Project Name: Lida Valley

Claim Name/Number	Serial No	Claimant	MER	TWN	RANGE	SEC	SUBDIV	CTY	LOC DATE
LV 1	NMC1117903	ARIZONA LITHIUM COMPANY		21 0060S	0420E		1 NE	NV009	12/21/2015
LV 2	NMC1117904	ARIZONA LITHIUM COMPANY		21 0060S	0420E		1 NE	NV009	12/21/2015
LV 3	NMC1117905	ARIZONA LITHIUM COMPANY		21 0060S	0420E		1 NE	NV009	12/21/2015
LV 4	NMC1117906	ARIZONA LITHIUM COMPANY		21 0060S	0420E		1 NE	NV009	12/21/2015
LV 5	NMC1117907	ARIZONA LITHIUM COMPANY		21 0060S	0420E		1 NE	NV009	12/21/2015
LV 6	NMC1117908	ARIZONA LITHIUM COMPANY		21 0060S	0420E		1 NE	NV009	12/21/2015
LV 7	NMC1117909	ARIZONA LITHIUM COMPANY		21 0060S	0420E		1 NE	NV009	12/21/2015
LV 8	NMC1117910	ARIZONA LITHIUM COMPANY		21 0060S	0420E		1 NE	NV009	12/21/2015
LV 9	NMC1117911	ARIZONA LITHIUM COMPANY		21 0060S	0420E		1 SE	NV009	12/21/2015
LV 10	NMC1117912	ARIZONA LITHIUM COMPANY		21 0060S	0420E		1 SE	NV009	12/21/2015
LV 11	NMC1117913	ARIZONA LITHIUM COMPANY		21 0060S	0420E		1 SE	NV009	12/21/2015
LV 12	NMC1117914	ARIZONA LITHIUM COMPANY		21 0060S	0420E		1 SE	NV009	12/21/2015
LV 13	NMC1117915	ARIZONA LITHIUM COMPANY		21 0060S	0420E		1 SE	NV009	12/21/2015
LV 14	NMC1117916	ARIZONA LITHIUM COMPANY		21 0060S	0420E		1 SE	NV009	12/21/2015
LV 15	NMC1117917	ARIZONA LITHIUM COMPANY		21 0060S	0420E		1 SE	NV009	12/21/2015
LV 16	NMC1117918	ARIZONA LITHIUM COMPANY		21 0060S	0420E		1 SE	NV009	12/21/2015
LV 17	NMC1117919	ARIZONA LITHIUM COMPANY		21 0060S	0420E		12 NE	NV009	12/21/2015
LV 18	NMC1117920	ARIZONA LITHIUM COMPANY		21 0060S	0420E		12 NE	NV009	12/21/2015
LV 19	NMC1117921	ARIZONA LITHIUM COMPANY		21 0060S	0420E		12 NE	NV009	12/21/2015
LV 20	NMC1117922	ARIZONA LITHIUM COMPANY		21 0060S	0420E		12 NE	NV009	12/21/2015
LV 21	NMC1117923	ARIZONA LITHIUM COMPANY		21 0060S	0420E		12 NE	NV009	12/21/2015
LV 22	NMC1117924	ARIZONA LITHIUM COMPANY		21 0060S	0420E		12 NE	NV009	12/21/2015
LV 23	NMC1117925	ARIZONA LITHIUM COMPANY		21 0060S	0420E		12 NE	NV009	12/21/2015
LV 24	NMC1117926	ARIZONA LITHIUM COMPANY		21 0060S	0430E		6 NW	NV009	12/21/2015
LV 25	NMC1117927	ARIZONA LITHIUM COMPANY		21 0060S	0430E		6 NW	NV009	12/21/2015
LV 26	NMC1117928	ARIZONA LITHIUM COMPANY		21 0060S	0430E		6 NW	NV009	12/21/2015
LV 27	NMC1117929	ARIZONA LITHIUM COMPANY		21 0060S	0430E		6 NW	NV009	12/21/2015
LV 28	NMC1117930	ARIZONA LITHIUM COMPANY		21 0060S	0430E		6 NE	NV009	12/21/2015
LV 29	NMC1117931	ARIZONA LITHIUM COMPANY		21 0060S	0430E		6 NE	NV009	12/21/2015
LV 30	NMC1117932	ARIZONA LITHIUM COMPANY		21 0060S	0430E		6 NE	NV009	12/21/2015
LV 31	NMC1117933	ARIZONA LITHIUM COMPANY		21 0060S	0430E		6 NE	NV009	12/21/2015

For personal use only

For personal use only

LV 32	NMC1117934	ARIZONA LITHIUM COMPANY	21 0060S	0430E	5 NW	NV009	12/21/2015
LV 33	NMC1117935	ARIZONA LITHIUM COMPANY	21 0060S	0430E	5 NW	NV009	12/21/2015
LV 34	NMC1117936	ARIZONA LITHIUM COMPANY	21 0060S	0430E	5 NW	NV009	12/21/2015
LV 35	NMC1117937	ARIZONA LITHIUM COMPANY	21 0060S	0430E	5 NW	NV009	12/21/2015
LV 36	NMC1117938	ARIZONA LITHIUM COMPANY	21 0060S	0430E	6 NW	NV009	12/21/2015
LV 37	NMC1117939	ARIZONA LITHIUM COMPANY	21 0060S	0430E	6 NW	NV009	12/21/2015
LV 38	NMC1117940	ARIZONA LITHIUM COMPANY	21 0060S	0430E	6 NW	NV009	12/21/2015
LV 39	NMC1117941	ARIZONA LITHIUM COMPANY	21 0060S	0430E	6 NW	NV009	12/21/2015
LV 40	NMC1117942	ARIZONA LITHIUM COMPANY	21 0060S	0430E	6 NE	NV009	12/21/2015
LV 41	NMC1117943	ARIZONA LITHIUM COMPANY	21 0060S	0430E	6 NE	NV009	12/21/2015
LV 42	NMC1117944	ARIZONA LITHIUM COMPANY	21 0060S	0430E	6 NE	NV009	12/21/2015
LV 43	NMC1117945	ARIZONA LITHIUM COMPANY	21 0060S	0430E	6 NE	NV009	12/21/2015
LV 44	NMC1117946	ARIZONA LITHIUM COMPANY	21 0060S	0430E	5 NW	NV009	12/21/2015
LV 45	NMC1117947	ARIZONA LITHIUM COMPANY	21 0060S	0430E	5 NW	NV009	12/21/2015
LV 46	NMC1117948	ARIZONA LITHIUM COMPANY	21 0060S	0430E	5 NW	NV009	12/21/2015
LV 47	NMC1117949	ARIZONA LITHIUM COMPANY	21 0060S	0430E	5 NW	NV009	12/21/2015
LV 48	NMC1117950	ARIZONA LITHIUM COMPANY	21 0060S	0430E	6 SW	NV009	12/21/2015
LV 49	NMC1117951	ARIZONA LITHIUM COMPANY	21 0060S	0430E	6 SW	NV009	12/21/2015
LV 50	NMC1117952	ARIZONA LITHIUM COMPANY	21 0060S	0430E	6 SW	NV009	12/21/2015
LV 51	NMC1117953	ARIZONA LITHIUM COMPANY	21 0060S	0430E	6 SW	NV009	12/21/2015
LV 52	NMC1117954	ARIZONA LITHIUM COMPANY	21 0060S	0430E	6 SE	NV009	12/21/2015
LV 53	NMC1117955	ARIZONA LITHIUM COMPANY	21 0060S	0430E	6 SE	NV009	12/21/2015
LV 54	NMC1117956	ARIZONA LITHIUM COMPANY	21 0060S	0430E	6 SE	NV009	12/21/2015
LV 55	NMC1117957	ARIZONA LITHIUM COMPANY	21 0060S	0430E	6 SE	NV009	12/21/2015
LV 56	NMC1117958	ARIZONA LITHIUM COMPANY	21 0060S	0430E	5 SW	NV009	12/21/2015
LV 57	NMC1117959	ARIZONA LITHIUM COMPANY	21 0060S	0430E	5 SW	NV009	12/21/2015
LV 58	NMC1117960	ARIZONA LITHIUM COMPANY	21 0060S	0430E	5 SW	NV009	12/21/2015
LV 59	NMC1117961	ARIZONA LITHIUM COMPANY	21 0060S	0430E	5 SW	NV009	12/21/2015
LV 60	NMC1117962	ARIZONA LITHIUM COMPANY	21 0060S	0430E	6 SW	NV009	12/21/2015
LV 61	NMC1117963	ARIZONA LITHIUM COMPANY	21 0060S	0430E	6 SW	NV009	12/22/2015
LV 62	NMC1117964	ARIZONA LITHIUM COMPANY	21 0060S	0430E	6 SW	NV009	12/22/2015
LV 63	NMC1117965	ARIZONA LITHIUM COMPANY	21 0060S	0430E	6 SW	NV009	12/22/2015
LV 64	NMC1117966	ARIZONA LITHIUM COMPANY	21 0060S	0430E	6 SE	NV009	12/22/2015
LV 65	NMC1117967	ARIZONA LITHIUM COMPANY	21 0060S	0430E	6 SE	NV009	12/22/2015
LV 66	NMC1117968	ARIZONA LITHIUM COMPANY	21 0060S	0430E	6 SE	NV009	12/22/2015
LV 67	NMC1117969	ARIZONA LITHIUM COMPANY	21 0060S	0430E	6 SE	NV009	12/22/2015
LV 68	NMC1117970	ARIZONA LITHIUM COMPANY	21 0060S	0430E	5 SW	NV009	12/22/2015
LV 69	NMC1117971	ARIZONA LITHIUM COMPANY	21 0060S	0430E	5 SW	NV009	12/22/2015

For personal use only

LV 70	NMC1117972	ARIZONA LITHIUM COMPANY	21 0060S	0430E	5 SW	NV009	12/22/2015
LV 71	NMC1117973	ARIZONA LITHIUM COMPANY	21 0060S	0430E	5 SW	NV009	12/22/2015
LV 72	NMC1117974	ARIZONA LITHIUM COMPANY	21 0060S	0430E	7 NW	NV009	12/22/2015
LV 73	NMC1117975	ARIZONA LITHIUM COMPANY	21 0060S	0430E	7 NW	NV009	12/22/2015
LV 74	NMC1117976	ARIZONA LITHIUM COMPANY	21 0060S	0430E	7 NW	NV009	12/22/2015
LV 75	NMC1117977	ARIZONA LITHIUM COMPANY	21 0060S	0430E	7 NW	NV009	12/22/2015
LV 76	NMC1117978	ARIZONA LITHIUM COMPANY	21 0060S	0430E	7 NE	NV009	12/22/2015
LV 77	NMC1117979	ARIZONA LITHIUM COMPANY	21 0060S	0430E	7 NE	NV009	12/22/2015
LV 78	NMC1117980	ARIZONA LITHIUM COMPANY	21 0060S	0430E	7 NE	NV009	12/22/2015
LV 79	NMC1117981	ARIZONA LITHIUM COMPANY	21 0060S	0430E	7 NE	NV009	12/22/2015
LV 80	NMC1117982	ARIZONA LITHIUM COMPANY	21 0060S	0430E	8 NW	NV009	12/22/2015
LV 81	NMC1117983	ARIZONA LITHIUM COMPANY	21 0060S	0430E	8 NW	NV009	12/22/2015
LV 82	NMC1117984	ARIZONA LITHIUM COMPANY	21 0060S	0430E	8 NW	NV009	12/22/2015
LV 83	NMC1117985	ARIZONA LITHIUM COMPANY	21 0060S	0430E	8 NW	NV009	12/22/2015
LV 84	NMC1117986	ARIZONA LITHIUM COMPANY	21 0060S	0430E	8 NE	NV009	12/22/2015
LV 85	NMC1117987	ARIZONA LITHIUM COMPANY	21 0060S	0430E	8 NE	NV009	12/22/2015
LV 86	NMC1117988	ARIZONA LITHIUM COMPANY	21 0060S	0430E	8 NE	NV009	12/22/2015
LV 87	NMC1117989	ARIZONA LITHIUM COMPANY	21 0060S	0430E	8 NE	NV009	12/22/2015
LV 88	NMC1117990	ARIZONA LITHIUM COMPANY	21 0060S	0430E	9 NW	NV009	12/22/2015
LV 89	NMC1117991	ARIZONA LITHIUM COMPANY	21 0060S	0430E	7 NW	NV009	12/22/2015
LV 90	NMC1117992	ARIZONA LITHIUM COMPANY	21 0060S	0430E	7 NW	NV009	12/22/2015
LV 91	NMC1117993	ARIZONA LITHIUM COMPANY	21 0060S	0430E	7 NW	NV009	12/22/2015
LV 92	NMC1117994	ARIZONA LITHIUM COMPANY	21 0060S	0430E	7 NW	NV009	12/22/2015
LV 93	NMC1117995	ARIZONA LITHIUM COMPANY	21 0060S	0430E	7 NE	NV009	12/22/2015
LV 94	NMC1117996	ARIZONA LITHIUM COMPANY	21 0060S	0430E	7 NE	NV009	12/22/2015
LV 95	NMC1117997	ARIZONA LITHIUM COMPANY	21 0060S	0430E	7 NE	NV009	12/22/2015
LV 96	NMC1117998	ARIZONA LITHIUM COMPANY	21 0060S	0430E	7 NE	NV009	12/22/2015
LV 97	NMC1117999	ARIZONA LITHIUM COMPANY	21 0060S	0430E	8 NW	NV009	12/22/2015
LV 98	NMC1118000	ARIZONA LITHIUM COMPANY	21 0060S	0430E	8 NW	NV009	12/22/2015
LV 99	NMC1118001	ARIZONA LITHIUM COMPANY	21 0060S	0430E	8 NW	NV009	12/22/2015
LV 100	NMC1118002	ARIZONA LITHIUM COMPANY	21 0060S	0430E	8 NW	NV009	12/22/2015
LV 101	NMC1118003	ARIZONA LITHIUM COMPANY	21 0060S	0430E	8 NE	NV009	12/22/2015
LV 102	NMC1118004	ARIZONA LITHIUM COMPANY	21 0060S	0430E	8 NE	NV009	12/22/2015
LV 103	NMC1118005	ARIZONA LITHIUM COMPANY	21 0060S	0430E	8 NE	NV009	12/22/2015
LV 104	NMC1118006	ARIZONA LITHIUM COMPANY	21 0060S	0430E	8 NE	NV009	12/22/2015
LV 105	NMC1118007	ARIZONA LITHIUM COMPANY	21 0060S	0430E	9 NW	NV009	12/22/2015
LV 106	NMC1118008	ARIZONA LITHIUM COMPANY	21 0060S	0430E	7 SW	NV009	12/22/2015
LV 107	NMC1118009	ARIZONA LITHIUM COMPANY	21 0060S	0430E	7 SW	NV009	12/22/2015

LV 108	NMC1118010	ARIZONA LITHIUM COMPANY	21 0060S	0430E	7 SE	NV009	12/22/2015
LV 109	NMC1118011	ARIZONA LITHIUM COMPANY	21 0060S	0430E	7 SE	NV009	12/22/2015
LV 110	NMC1118012	ARIZONA LITHIUM COMPANY	21 0060S	0430E	7 SE	NV009	12/22/2015
LV 111	NMC1118013	ARIZONA LITHIUM COMPANY	21 0060S	0430E	7 SE	NV009	12/22/2015
LV 112	NMC1118014	ARIZONA LITHIUM COMPANY	21 0060S	0430E	8 SW	NV009	12/22/2015
LV 113	NMC1118015	ARIZONA LITHIUM COMPANY	21 0060S	0430E	8 SW	NV009	12/22/2015
LV 114	NMC1118016	ARIZONA LITHIUM COMPANY	21 0060S	0430E	8 SW	NV009	12/22/2015
LV 115	NMC1118017	ARIZONA LITHIUM COMPANY	21 0060S	0430E	8 SW	NV009	12/22/2015
LV 116	NMC1118018	ARIZONA LITHIUM COMPANY	21 0060S	0430E	8 SE	NV009	12/22/2015
LV 117	NMC1118019	ARIZONA LITHIUM COMPANY	21 0060S	0430E	8 SE	NV009	12/22/2015
LV 118	NMC1118020	ARIZONA LITHIUM COMPANY	21 0060S	0430E	8 SE	NV009	12/22/2015
LV 119	NMC1118021	ARIZONA LITHIUM COMPANY	21 0060S	0430E	8 SE	NV009	12/22/2015
LV 120	NMC1118022	ARIZONA LITHIUM COMPANY	21 0060S	0430E	9 SW	NV009	12/22/2015
LV 121	NMC1118023	ARIZONA LITHIUM COMPANY	21 0060S	0430E	7 SE	NV009	12/22/2015
LV 122	NMC1118024	ARIZONA LITHIUM COMPANY	21 0060S	0430E	7 SE	NV009	12/22/2015
LV 123	NMC1118025	ARIZONA LITHIUM COMPANY	21 0060S	0430E	8 SW	NV009	12/22/2015
LV 124	NMC1118026	ARIZONA LITHIUM COMPANY	21 0060S	0430E	8 SW	NV009	12/22/2015
LV 125	NMC1118027	ARIZONA LITHIUM COMPANY	21 0060S	0430E	8 SW	NV009	12/22/2015
LV 126	NMC1118028	ARIZONA LITHIUM COMPANY	21 0060S	0430E	8 SW	NV009	12/22/2015
LV 127	NMC1118029	ARIZONA LITHIUM COMPANY	21 0060S	0430E	8 SE	NV009	12/22/2015
LV 128	NMC1118030	ARIZONA LITHIUM COMPANY	21 0060S	0430E	8 SE	NV009	12/22/2015
LV 129	NMC1118031	ARIZONA LITHIUM COMPANY	21 0060S	0430E	8 SE	NV009	12/22/2015
LV 130	NMC1118032	ARIZONA LITHIUM COMPANY	21 0060S	0430E	8 SE	NV009	12/22/2015
LV 131	NMC1118033	ARIZONA LITHIUM COMPANY	21 0060S	0430E	9 SW	NV009	12/22/2015

Project Name: Muddy Mountain

NMC1118539	LODE	MM 1	ARIZONA LITHIUM COMPANY	NMC1118539	12/24/2015	2 0 1 6
NMC1118540	LODE	MM 2	ARIZONA LITHIUM COMPANY	NMC1118539	12/24/2015	2 0 1 6
NMC1118541	LODE	MM 3	ARIZONA LITHIUM COMPANY	NMC1118539	12/24/2015	2 0 1 6
NMC1118542	LODE	MM 4	ARIZONA LITHIUM COMPANY	NMC1118539	12/24/2015	2 0 1 6
NMC1118543	LODE	MM 5	ARIZONA LITHIUM COMPANY	NMC1118539	12/24/2015	2 0 1 6
NMC1118544	LODE	MM 6	ARIZONA LITHIUM COMPANY	NMC1118539	12/24/2015	2 0 1 6
NMC1118545	LODE	MM 7	ARIZONA LITHIUM COMPANY	NMC1118539	12/24/2015	2 0 1 6
NMC1118546	LODE	MM 8	ARIZONA LITHIUM COMPANY	NMC1118539	12/24/2015	2 0 1 6
NMC1118547	LODE	MM 9	ARIZONA LITHIUM COMPANY	NMC1118539	12/24/2015	2 0 1 6
NMC1118548	LODE	MM 10	ARIZONA LITHIUM COMPANY	NMC1118539	12/24/2015	2 0 1 6
NMC1118549	LODE	MM 11	ARIZONA LITHIUM COMPANY	NMC1118539	12/24/2015	2 0 1 6
NMC1118550	LODE	MM 12	ARIZONA LITHIUM COMPANY	NMC1118539	12/24/2015	2 0 1 6

For personal use only

For personal use only

NMC1118551	LODE	MM 13	ARIZONA LITHIUM COMPANY	NMC1118539	12/24/2015	2 0 1 6
NMC1118552	LODE	MM 14	ARIZONA LITHIUM COMPANY	NMC1118539	12/25/2015	2 0 1 6
NMC1118553	LODE	MM 15	ARIZONA LITHIUM COMPANY	NMC1118539	12/25/2015	2 0 1 6
NMC1118554	LODE	MM 16	ARIZONA LITHIUM COMPANY	NMC1118539	12/25/2015	2 0 1 6
NMC1118555	LODE	MM 17	ARIZONA LITHIUM COMPANY	NMC1118539	12/25/2015	2 0 1 6
NMC1118556	LODE	MM 18	ARIZONA LITHIUM COMPANY	NMC1118539	12/25/2015	2 0 1 6
NMC1118557	LODE	MM 19	ARIZONA LITHIUM COMPANY	NMC1118539	12/25/2015	2 0 1 6
NMC1118558	LODE	MM 20	ARIZONA LITHIUM COMPANY	NMC1118539	12/25/2015	2 0 1 6
NMC1118559	LODE	MM 21	ARIZONA LITHIUM COMPANY	NMC1118539	12/24/2015	2 0 1 6
NMC1118560	LODE	MM 22	ARIZONA LITHIUM COMPANY	NMC1118539	12/24/2015	2 0 1 6
NMC1118561	LODE	MM 23	ARIZONA LITHIUM COMPANY	NMC1118539	12/24/2015	2 0 1 6
NMC1118562	LODE	MM 24	ARIZONA LITHIUM COMPANY	NMC1118539	12/24/2015	2 0 1 6
NMC1118563	LODE	MM 25	ARIZONA LITHIUM COMPANY	NMC1118539	12/24/2015	2 0 1 6
NMC1118564	LODE	MM 26	ARIZONA LITHIUM COMPANY	NMC1118539	12/24/2015	2 0 1 6
NMC1118565	LODE	MM 27	ARIZONA LITHIUM COMPANY	NMC1118539	12/24/2015	2 0 1 6
NMC1118566	LODE	MM 28	ARIZONA LITHIUM COMPANY	NMC1118539	12/24/2015	2 0 1 6
NMC1118567	LODE	MM 29	ARIZONA LITHIUM COMPANY	NMC1118539	12/24/2015	2 0 1 6
NMC1118568	LODE	MM 30	ARIZONA LITHIUM COMPANY	NMC1118539	12/24/2015	2 0 1 6
NMC1118569	LODE	MM 31	ARIZONA LITHIUM COMPANY	NMC1118539	12/27/2015	2 0 1 6
NMC1118570	LODE	MM 32	ARIZONA LITHIUM COMPANY	NMC1118539	12/25/2015	2 0 1 6
NMC1118571	LODE	MM 33	ARIZONA LITHIUM COMPANY	NMC1118539	12/25/2015	2 0 1 6
NMC1118572	LODE	MM 34	ARIZONA LITHIUM COMPANY	NMC1118539	12/25/2015	2 0 1 6
NMC1118573	LODE	MM 35	ARIZONA LITHIUM COMPANY	NMC1118539	12/25/2015	2 0 1 6
NMC1118574	LODE	MM 36	ARIZONA LITHIUM COMPANY	NMC1118539	12/25/2015	2 0 1 6
NMC1118575	LODE	MM 37	ARIZONA LITHIUM COMPANY	NMC1118539	12/25/2015	2 0 1 6
NMC1118576	LODE	MM 38	ARIZONA LITHIUM COMPANY	NMC1118539	12/25/2015	2 0 1 6
NMC1118577	LODE	MM 39	ARIZONA LITHIUM COMPANY	NMC1118539	12/25/2015	2 0 1 6
NMC1118578	LODE	MM 40	ARIZONA LITHIUM COMPANY	NMC1118539	12/25/2015	2 0 1 6
NMC1118579	LODE	MM 41	ARIZONA LITHIUM COMPANY	NMC1118539	12/25/2015	2 0 1 6
NMC1118580	LODE	MM 42	ARIZONA LITHIUM COMPANY	NMC1118539	12/25/2015	2 0 1 6
NMC1118581	LODE	MM 43	ARIZONA LITHIUM COMPANY	NMC1118539	12/25/2015	2 0 1 6
NMC1118582	LODE	MM 44	ARIZONA LITHIUM COMPANY	NMC1118539	12/25/2015	2 0 1 6
NMC1118583	LODE	MM 45	ARIZONA LITHIUM COMPANY	NMC1118539	12/25/2015	2 0 1 6
NMC1118584	LODE	MM 46	ARIZONA LITHIUM COMPANY	NMC1118539	12/25/2015	2 0 1 6
NMC1118585	LODE	MM 47	ARIZONA LITHIUM COMPANY	NMC1118539	12/25/2015	2 0 1 6
NMC1118586	LODE	MM 48	ARIZONA LITHIUM COMPANY	NMC1118539	12/25/2015	2 0 1 6
NMC1118587	LODE	MM 49	ARIZONA LITHIUM COMPANY	NMC1118539	12/25/2015	2 0 1 6
NMC1118588	LODE	MM 50	ARIZONA LITHIUM COMPANY	NMC1118539	12/25/2015	2 0 1 6

NMC1118627	LODE	MM 89	ARIZONA LITHIUM COMPANY	NMC1118539	12/30/2015	2 0 1 6
NMC1118628	LODE	MM 90	ARIZONA LITHIUM COMPANY	NMC1118539	12/30/2015	2 0 1 6
NMC1118629	LODE	MM 91	ARIZONA LITHIUM COMPANY	NMC1118539	12/30/2015	2 0 1 6
NMC1118630	LODE	MM 92	ARIZONA LITHIUM COMPANY	NMC1118539	12/30/2015	2 0 1 6
NMC1118631	LODE	MM 93	ARIZONA LITHIUM COMPANY	NMC1118539	12/30/2015	2 0 1 6
NMC1118632	LODE	MM 94	ARIZONA LITHIUM COMPANY	NMC1118539	12/30/2015	2 0 1 6
NMC1118633	LODE	MM 95	ARIZONA LITHIUM COMPANY	NMC1118539	12/30/2015	2 0 1 6
NMC1118634	LODE	MM 96	ARIZONA LITHIUM COMPANY	NMC1118539	12/30/2015	2 0 1 6
NMC1118635	LODE	MM 97	ARIZONA LITHIUM COMPANY	NMC1118539	12/30/2015	2 0 1 6
NMC1118636	LODE	MM 98	ARIZONA LITHIUM COMPANY	NMC1118539	12/30/2015	2 0 1 6
NMC1118637	LODE	MM 99	ARIZONA LITHIUM COMPANY	NMC1118539	12/30/2015	2 0 1 6
NMC1118638	LODE	MM 100	ARIZONA LITHIUM COMPANY	NMC1118539	12/30/2015	2 0 1 6
NMC1118639	LODE	MM 101	ARIZONA LITHIUM COMPANY	NMC1118539	12/30/2015	2 0 1 6
NMC1118640	LODE	MM 102	ARIZONA LITHIUM COMPANY	NMC1118539	12/30/2015	2 0 1 6
NMC1118641	LODE	MM 103	ARIZONA LITHIUM COMPANY	NMC1118539	12/30/2015	2 0 1 6
NMC1118642	LODE	MM 104	ARIZONA LITHIUM COMPANY	NMC1118539	12/30/2015	2 0 1 6
NMC1118643	LODE	MM 105	ARIZONA LITHIUM COMPANY	NMC1118539	12/29/2015	2 0 1 6
NMC1118644	LODE	MM 106	ARIZONA LITHIUM COMPANY	NMC1118539	12/29/2015	2 0 1 6
NMC1118645	LODE	MM 107	ARIZONA LITHIUM COMPANY	NMC1118539	12/29/2015	2 0 1 6
NMC1118646	LODE	MM 108	ARIZONA LITHIUM COMPANY	NMC1118539	12/29/2015	2 0 1 6
NMC1118647	LODE	MM 109	ARIZONA LITHIUM COMPANY	NMC1118539	12/29/2015	2 0 1 6
NMC1118648	LODE	MM 110	ARIZONA LITHIUM COMPANY	NMC1118539	12/29/2015	2 0 1 6
NMC1118649	LODE	MM 111	ARIZONA LITHIUM COMPANY	NMC1118539	12/29/2015	2 0 1 6
NMC1118650	LODE	MM 112	ARIZONA LITHIUM COMPANY	NMC1118539	12/29/2015	2 0 1 6
NMC1118651	LODE	MM 113	ARIZONA LITHIUM COMPANY	NMC1118539	12/27/2015	2 0 1 6
NMC1118652	LODE	MM 114	ARIZONA LITHIUM COMPANY	NMC1118539	12/27/2015	2 0 1 6
NMC1118653	LODE	MM 115	ARIZONA LITHIUM COMPANY	NMC1118539	12/27/2015	2 0 1 6
NMC1118654	LODE	MM 116	ARIZONA LITHIUM COMPANY	NMC1118539	12/27/2015	2 0 1 6
NMC1118655	LODE	MM 117	ARIZONA LITHIUM COMPANY	NMC1118539	12/29/2015	2 0 1 6
NMC1118656	LODE	MM 118	ARIZONA LITHIUM COMPANY	NMC1118539	12/29/2015	2 0 1 6
NMC1118657	LODE	MM 119	ARIZONA LITHIUM COMPANY	NMC1118539	12/27/2015	2 0 1 6
NMC1118658	LODE	MM 120	ARIZONA LITHIUM COMPANY	NMC1118539	12/27/2015	2 0 1 6
NMC1118659	LODE	MM 121	ARIZONA LITHIUM COMPANY	NMC1118539	12/27/2015	2 0 1 6
NMC1118660	LODE	MM 122	ARIZONA LITHIUM COMPANY	NMC1118539	12/27/2015	2 0 1 6
NMC1118661	LODE	MM 123	ARIZONA LITHIUM COMPANY	NMC1118539	12/27/2015	2 0 1 6
NMC1118662	LODE	MM 140	ARIZONA LITHIUM COMPANY	NMC1118539	12/26/2015	2 0 1 6

For personal use only

ANNEXURE B

Item 6.3 – Interests in mining tenements at the end of the quarter

Location	Project Name	Tenement #	Ownership	Titleholder
Western Australia	Super Nova	E69/3066	100%	Caeneus Resources Pty Ltd
Western Australia	Pardoo	E45/1866	<i>Refer to Note 1 below</i>	Segue (Pardoo) Limited
Western Australia	Pardoo	E45/4279	<i>Refer to Note 1 below</i>	Segue (Pardoo) Limited
Western Australia	Pardoo	E45/4585 - application	100%	Applicant – Port Exploration Pty Ltd
Western Australia	Pardoo	E45/4490 - application	<i>Refer to Note 1 below</i>	Applicant – Omni Projects Pty Ltd
Western Australia	Pardoo	E45/4516 - application	<i>Refer to Note 1 below</i>	Applicant – Omni Projects Pty Ltd
Western Australia	Pardoo	E45/4554 - application	<i>Refer to Note 1 below</i>	Applicant – Omni Projects Pty Ltd
Western Australia	Pardoo	E45/4671 – application	<i>Refer to Note 1 below</i>	Applicant – Plumridge East Pty Ltd
Western Australia	Pardoo	P45/3011 - application	<i>Refer to Note 1 below</i>	Applicant – Plumridge East Pty Ltd
Western Australia	Pardoo	P45/3012 - application	<i>Refer to Note 1 below</i>	Applicant – Plumridge East Pty Ltd
Western Australia	Mt Dockrell	E80/4994 - application	100%	Caeneus Resources Pty Ltd
Nevada, USA	Lida Valley	<i>As per Annexure A above</i>	100%	Nevada Metals Pty Ltd
Nevada USA	Muddy Mountain	<i>As per Annexure A above</i>	100%	Nevada Metals Pty Ltd

Note 1: *Port Exploration entitlement to earn up to 80% via Farm-In Joint Venture Agreement*

For personal use only